

# Sound View Camp Registration

You can also register ONLINE at [soundviewcamp.com](http://soundviewcamp.com)

## CAMPER INFORMATION

Last Name \_\_\_\_\_ First \_\_\_\_\_ Middle Initial \_\_\_\_\_  
 Address \_\_\_\_\_ City \_\_\_\_\_ State \_\_\_\_\_ Zip \_\_\_\_\_  
 Primary Phone \_\_\_\_\_ Age \_\_\_\_\_ Birthdate \_\_\_\_/\_\_\_\_/\_\_\_\_ Gender \_\_\_\_\_  
 Current Grade \_\_\_\_\_ Current School Attending \_\_\_\_\_ How did you find out about us? \_\_\_\_\_

## LIVES WITH PARENT/GUARDIAN INFORMATION

Primary Contact \_\_\_\_\_ Relationship \_\_\_\_\_  
 Primary Phone \_\_\_\_\_  Alternate Phone \_\_\_\_\_  
 Secondary Contact \_\_\_\_\_ Relationship \_\_\_\_\_  
 Primary Phone \_\_\_\_\_  Alternate Phone \_\_\_\_\_   
 Primary Household Email Address \_\_\_\_\_

## EMERGENCY CONTACTS (We will contact you first but who, outside the immediate family, can we contact in an emergency?)

1. Name \_\_\_\_\_ Phone \_\_\_\_\_ Relationship \_\_\_\_\_  
 2. Name \_\_\_\_\_ Phone \_\_\_\_\_ Relationship \_\_\_\_\_

## SESSION INFORMATION

**Spring Break Camp:** TApril 3-5 \$120 TApril 10-12 \$120 TApril 17-19 \$120 TApril 24-26 \$120  
**Week 1 - July 14-20:** TYouth Camp \$395 TExpedition \$440 TMini Camp (Wed to Sat) \$275 TLIT (July 14-27) \$425  
**Week 2 - July 21-27:** TYouth Camp \$395 TExpedition \$440 TMini Camp (Sun to Wed) \$275  
**Week 3 - July 28-Aug 3:** TYouth Camp \$395 TExpedition \$440 TMini Camp (Wed to Sat) \$275 TLIT (Jul 28-Aug 10) \$425  
**Week 4 - August 4-10:** TYouth Camp \$395 TExpedition \$440 TMini Camp (Sun to Wed) \$275

Cabinmate Request \_\_\_\_\_  
 (Please - limit two, same gender and close to same age)

**Family Event** (indicate which one, attendees and ages): \_\_\_\_\_

Camp Session Fee -minimum \$75 deposit due with registration	\$
15% Early Bird Discount (Youth Camp, Expedition, Mini Camp and LIT Only) - Expires March 31	-\$
(Summer Camp Sessions only) Bus Transportation (\$20 one way, \$35 round trip)	\$
TOTAL	\$

Payment Amount \_\_\_\_\_ TVISA/MC TDiscover TAmerican Express TCheck Enclosed (payable to Sound View Camp)  
 Credit Card # \_\_\_\_\_ Exp Date \_\_\_\_\_ Billing Zip \_\_\_\_\_ Amount \_\_\_\_\_  
 Name on Card \_\_\_\_\_ Signature \_\_\_\_\_  
 TCharge the balance two weeks before session starts TSend Invoice

Send completed form to: **Sound View Camp, 8515 Key Peninsula Hwy S, Longbranch, WA 98351**



Safe - Fun - Affordable

# Experience the Sound!

We can only put so much excitement into a paper flyer. For the full, living color experience, be sure to visit [soundviewcamp.com](http://soundviewcamp.com).



## Memorial Day Weekend Family Camp

May 24-27

Come for a long weekend of

wonderful camp memories. Besides all of the fun activities that go along with a family camp event, this one will feature great music, mini concerts, open mics and the ability to learn play and instrument and sing along.

Age 13 and over - \$120  
 Ages 6-12 - \$80



**NEW! - catch a bus to Sound View Camp for spring OEE Camp, summer Youth Camp and Expedition.** Save gas, time, wear and tear, and the planet! Rest assured that your kids will get there and back safely, as they'll be accompanied by Sound View staff! Stops in Seattle, Olympia, Tacoma, and Puyallup Details when registering.



**Saturday, March 16**  
**10:00 AM - 4:00 PM**  
**Adults \$60**  
**Youth (10-17) \$35**

We are doing it again - running a 5K obstacle course through camp on a soggy March Saturday. Mark your calendar for our unique, family-friendly mud run on our nature trails. **You can run to compete for the best time or you can run just for the thrill of getting filthy - or you can do both.** This year childcare by Sound View staff will also be available while you run.

**This event is a fundraiser to help families afford summer camp.**

Be prepared for more mud, twelve awesome obstacles, good food, lasting memories, and great fun!

**Register online.**



## Summer Youth Camp

We are offering four action-filled weeks of summer camp and there is a **15% early bird discount until March 1.**

**July 14 to 20**  
**July 21 to 27**  
**July 28 to August 3**  
**August 4 to 10**

Each one-week session features:

### Youth Camp

ages 8 to 14, \$395

Our traditional camp experience with fun, fellowship, exploration, and awesome activities.

### Mini Camp

ages 6 to 9, \$275

A 4 day (3 night) adventure where young and first-time campers will get a taste of summer camp.

### Expedition

ages 12 to 15, \$440

Much of the fun of youth camp plus a three day canoe/bike adventure to Anderson Island.

### Leaders in Training

entering 10th Grade, \$425

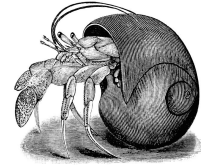
LITs stay at camp for two weeks to learn about being a camp leader. They put their new skills into practice assisting with the mini camp kids.



## Spring Break Outdoor Environmental Education Camp

Enjoy learning about nature, as well as participating in classic camp activities, at one of our four spring break camps for ages 9-14.

We will be exploring the tidal zone, searching for amphibian eggs, cooking over outdoor fires, creating nature art, challenging ourselves at the high ropes course, shooting arrows, and more!



Choose the week that aligns with your child's spring break. Bus transportation will be provided to and from Sound View Camp for weeks 1, 2 and 4..

- Week 1.** April 3-5 - \$120
- Week 2.** April 10-12 - \$120
- Week 3.** April 17-19 - \$60
- Week 4.** April 24-26 - \$120

**We're hiring staff!**  
For a fantastic summer of "making a difference" while working alongside lifelong friends, call or visit our website.

## T A F F Y Week July 7-12 Totally Affordable Family Fun, YAY! Our week of family camp is perfect for the family that is looking for



a "mini vacation" tailored to their own schedule. Stay for one, two, three, four or even five nights and be treated to tasty food, fun camp activities, and new friends. Each TAFFY night is limited to eight families so reserve your place soon.

### Labor Day Weekend Family Camp August 30 - September 2

Back again after a successful first year! What better place to spend the long weekend relaxing and rejuvenating before school starts again? Soak up the end-of-summer sun and enjoy having all your meals provided to you.

- Age 13 and over - \$120**
- Ages 6-12 - \$80**

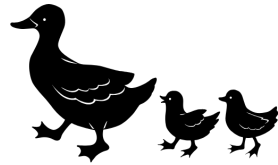
### Goody Work Weekends

Do you have an adult or trusty teen group eager to volunteer? We have a number of projects and a bunch of potential weekends before summer requiring both skilled and unskilled labor. Contact Goody, Sound View's



site manager, at 253-884-9202 Ext 3 to "hammer" (get it?) out details.

## Parent/Child Weekends

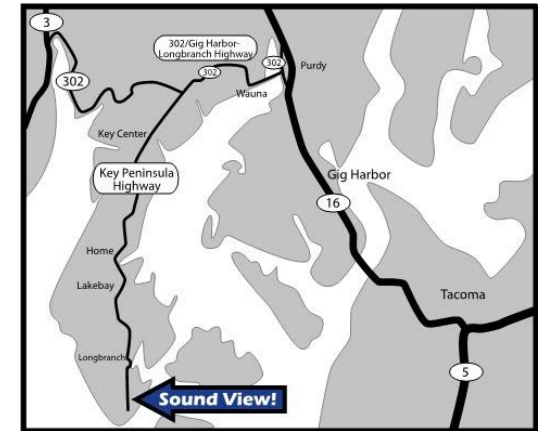


- Mom and Me Camp  
May 10-12**
- Dad and Me Camp  
June 14-16**
- Fall Foliage Camp  
(all parents)  
October 11-13**

Our parent/child events are wonderful ways for parents (moms, dads, uncles, aunts, grandpas, grandmas), and kids to get away for the weekend and learn new things such as:

- start an outdoor fire and cook something tasty
  - shoot arrows
  - paddle a canoe
  - create a craft project
  - learn about our farm and garden
  - go on a nature hike
  - sing songs at the campfire
  - make s'mores
  - explore the tidal zone
  - go down the zip line
  - enjoy great food and have lots of fun!
- Age 13 and over - \$60**  
**Ages 6-12 - \$45**

Sound View Camp is an amazing place. Woodlands which sweep down to a sandy beach on Puget Sound, fields on which to play, water on which to canoe, trails to explore, farm critters to love, accommodations from the "campy" to the "cozy" to the "lodgy", tasty and wholesome food, archery, paintball, ukuleles, gardens, games, challenge course, a friendly, talented staff, and the feeling that you have a quiet, little piece of God's creation all to yourself. Now - imagine your group, family, school, or child at Sound View Camp having the best time ever!



### SUMMER CAMP

Sound View offers four weeks of wonderful Christian camping experiences for youth, tweens and teens ages six to fifteen featuring new friends, caring leaders, fun-filled days, and magical evenings.



### FAMILY EVENTS

Family events occur throughout the year. For some - it is a way to introduce the family to a camp experience without the hassles of pitching a tent or cooking outdoors. Sometimes it is to get a child comfortable at Sound View before they come for a summer session. We even have campers who have convinced their parent(s) to come to family camp so they can share their summer experiences. There is something for everyone at a family event, whether you want to sit back and relax, or participate in all of Sound View's fun activities! Come, join us!

### GROUP RETREATS

Bring your group to Sound View and be treated to a friendly, talented staff, comfortable lodging, hearty and wholesome meals, a variety of indoor and outdoor meeting spaces, and fun and educational activities for all ages. Our site is ideal for youth groups - large and small, family gatherings, and retreats for adventurous adults. Let us help you plan your group experience and we know you will be pleasantly surprised by our affordable rates.

### OUTDOOR ENVIRONMENTAL EDUCATION

We use an experiential education model to teach environmental awareness, social skills, and complimentary lesson plans that bring the experience alive. We use the natural beauty of our local ecosystems as great outdoor classrooms. Students are also treated to a traditional camp experience with canoeing, archery, group initiatives, and campfires.

Register by Mail (fill out the form and mail it in)  
Register Online ([www.soundviewcamp.com](http://www.soundviewcamp.com))  
Register by Phone (253) 884-9202 Ext. 0  
15% early bird discount for summer camp is going on until March 31!